

WCF General Council election process

Introduction

Following the approval of the WCF Bylaws in 2008 and subsequent implementation time line endorsed by the WCF General Council, WCF held its first the General Council election in 2010.

65 candidates from 46 countries were received, with national elections occurring for India, Jordan, Spain and Turkey.

Prior to this, the Council acted as a “General Assembly” mode, with more than 1550 chamber members from over 125 countries invited to attend the meetings. An Assembly approach had not provided the WCF General Council to address in a consistent and strategic manner, the scope of WCF projects and activities.

Approximately 1500 members are eligible to vote for the 20 elected places. Each member is entitled to choose 20 of their preferred candidates from the WCF General Council ballot total number of candidates.

Voting is not mandatory for members.

WCF Bylaws:

- 4.1.1 The General Council shall consist of chamber delegates from eligible WCF member countries.
- 4.1.2 WCF chamber members shall be invited to vote for candidates to fill 20 places of the General Council. All members of WCF shall be entitled to nominate candidates for election, provided these candidates are willing to serve and able to attend the General Council's meetings. **Members shall be elected for a term of three years, twice renewable.**
- 4.1.3 If there are more nominations than vacancies, members of WCF will be asked to elect from the eligible candidates by means of a postal or electronic ballot. Each member shall have one vote.
- 4.1.4 Each country will be entitled to one candidate to be voted onto the WCF General Council. Where there is more than one nomination from a country, the WCF members from that country shall elect their representative. The ICC national committee, where existing, shall assist WCF in this election process. Additional General Council members may be co-opted from the countries of those elected candidates.

WCF General Council Composition

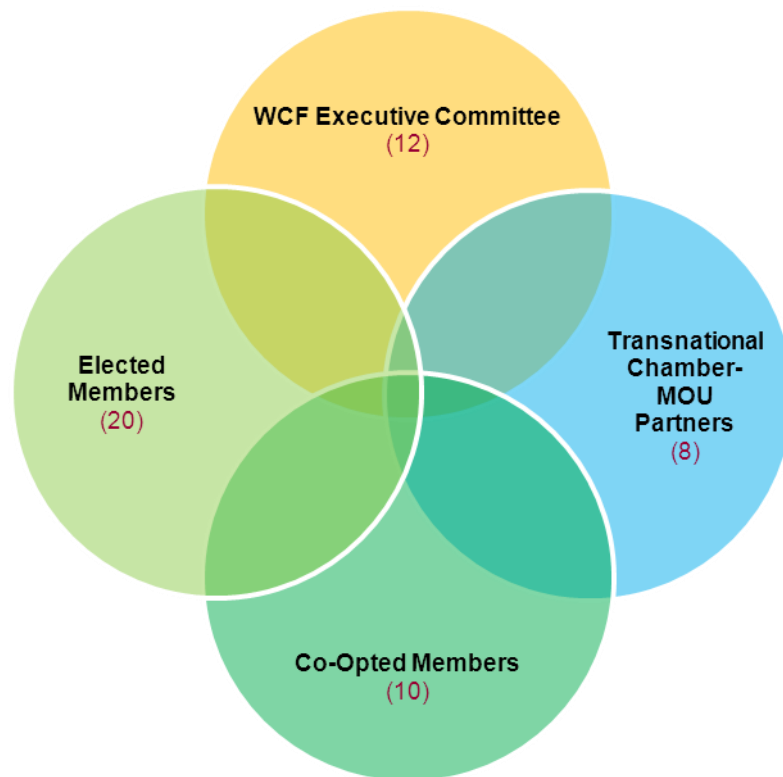
The composition of the WCF General Council represents and is thus comprised of local, regional, national, bilateral and transnational chambers of commerce and industry. These chambers represent:

- All geographic areas of the world,
- large and small chambers,
- public and private law chambers,
- developed and developing countries,
- chamber members and chamber executives.

The WCF General Council is composed of 50 seats, divided into four groups

- 20 seats are allocated to Elected members
- 10 seats are allocated to Co-Opted members
- 12 seats are allocated to the WCF Executive Committee
- 8 seats are allocated to Transnational Chamber partners

WCF General Council (50 seats)

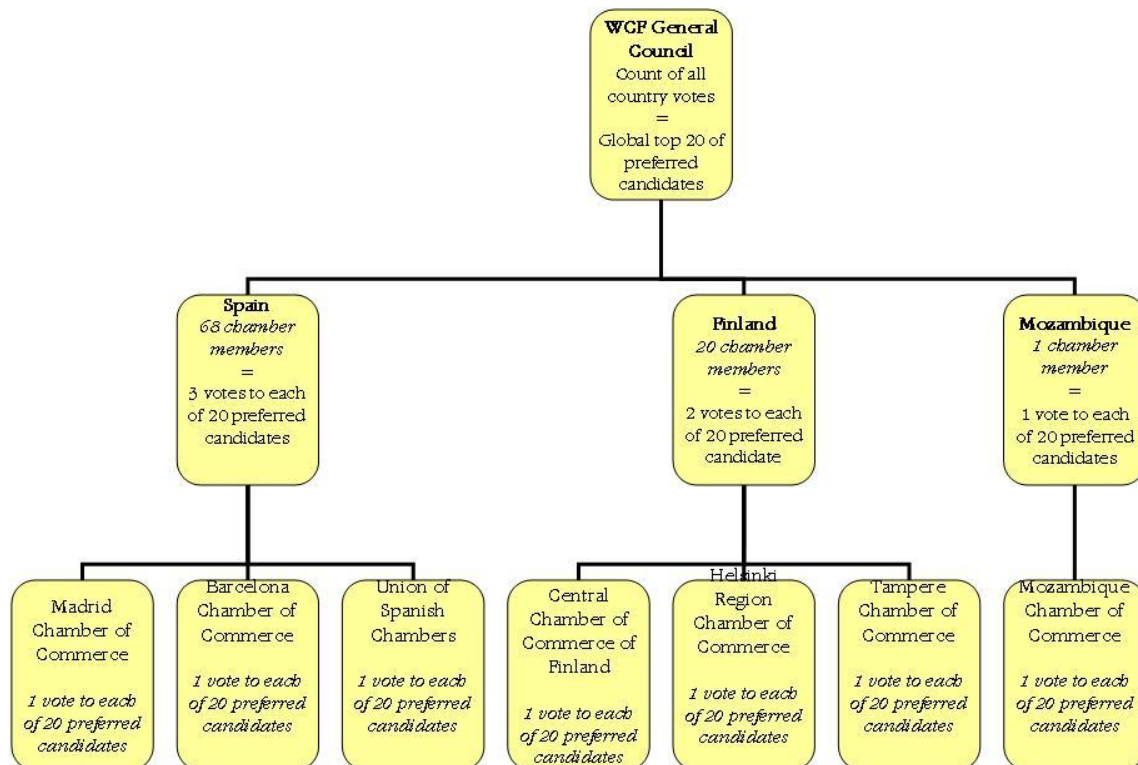


Voting structure

1. In each ICC WCF chamber member, from every member country, shall elect their 20 preferred candidates from the global WCF election ballot. The results of each chamber's vote shall be totaled, selecting each country's preferred 20 candidates.
2. Each country's preferred 20 candidates for the WCF General Council, shall be allocated 1 to 3 votes, depending upon the total number of chambers which are members in their country. This scaling system is similar to that of the ICC World Council with respect to quota scale.

From 1 to 15 chamber members = 1 vote
From 16 to 30 chamber members = 2 votes
More than 30 chamber members = 3 votes

3. Based upon the globally tally of the total number of votes for each candidate, the top 20 candidates (with the highest number of votes) will join the General Council as Elected members.



For example:

- All Spanish chamber members give 1 vote to their 20 preferred candidates.
- Spain counts 68 chamber members. The 20 preferred candidates designated in Spain therefore receive 3 votes each.
- The global tally of votes per candidate are counted.
- The 20 candidates who totalize the highest number of votes join the WCF General Council as Elected members.
- Candidates who were not successful in the election process may be eligible as co-opted members of the WCF General Council, as decided by the WCF Executive Committee.